

**UNITED STATES DISTRICT COURT
CENTRAL DISTRICT OF ILLINOIS
SPRINGFIELD**

Mary Moore, individually and on behalf of all
others similarly situated,

Plaintiff,

- against -

Kellogg Sales Company,

Defendant

3:22-cv-03172

Class Action Complaint

Jury Trial Demanded

Plaintiff alleges upon information and belief, except for allegations pertaining to Plaintiff, which are based on personal knowledge:

1. Kellogg Sales Company (“Defendant”) manufactures, markets, labels and sells lightly toasted, dark and mottled crackers with specks of what appear to be pieces of grain, identified as “Harvest Wheat” under the Kellogg’s Toasteds Crackers brand (“Product”).



2. The representations cause consumers to expect it contains a greater absolute and relative amount of whole grains compared to refined grains than it does.

I. CONSUMERS VALUE WHOLE GRAINS

3. Consumers increasingly prefer whole grains to non-whole, or refined, grains.
4. Whole grains are nutritionally superior to non-whole grains because they include the entire grain seed, consisting of the endosperm, bran, and germ.
5. The bran and germ contain important nutrients like fiber, vitamins, minerals, and antioxidants, such as iron, zinc, folate, magnesium, thiamin, niacin, selenium, riboflavin, manganese, copper, vitamin A, and vitamin B6.
6. In contrast, “non-whole grains” or “refined grains” have been processed to remove the bran and germ, thereby removing the fiber and most other nutrients.
7. Most refined grains are enriched, a process that adds back some of the previously removed iron and B vitamins, such as thiamin, riboflavin, niacin, and folic acid.
8. Other nutrients, including fiber, vitamin E, vitamin B6, vitamin K, magnesium, manganese, potassium, phosphorus, copper, calcium, and selenium, are not added back.
9. Where flour is made of refined grains, which only contains the endosperm and mainly starch, it is white in color (“white flour”).

II. CONSUMERS EXPECT FIBER FROM PRODUCTS REPRESENTED AS WHOLE GRAIN

10. The 2015-2020 Dietary Guidelines for Americans recommend that at least half of all grains eaten be whole grains.
11. The Dietary Guidelines recommend consuming 48g of whole grains and 28g of fiber per day.
12. The Dietary Guidelines promote whole grains as an important source of fiber.
13. 87% of consumers try to consume more whole grains and 92% try to get more fiber.
14. Research, including studies conducted by Defendant, proves that consumers seek

whole grains because they want more fiber.

15. In surveys, more than 60% of consumers stated they want to consume more whole grains to improve their digestive health, which is reflective of a desire to increase fiber intake.

16. Almost 75% of consumers who are presented representations which contain express and implied representations that a product is made with, or contains whole grains, will expect that food to be at least a good source of fiber – 10% of the daily value.

17. Almost 70% of consumers agree with the statement that whole grains are one of the best sources of fiber.

18. 62% of consumers agree that foods made from whole grains are one of the best sources of fiber.

19. 46% of consumers rely on foods with whole grains for their daily fiber needs.

20. Based on the proven connection with fiber, consumers expect foods represented – directly or indirectly – as whole grain, do more than tell consumers a product contains a type of grain ingredient.

III. CONSUMER CONFUSION ABOUT WHOLE GRAINS

21. Despite consumers' desire to consume more whole grains, a recent study in the journal, Public Health Nutrition, concluded that labeling practices stymie these efforts.

22. The study found that the most significant information considered by consumers in comparing foods with different amounts of whole grain was not the ingredient list or nutrition facts, but the front label.

23. When products used terms like “multigrain” or “wheat” on the front label, between thirty to fifty percent of participants believed these foods had more whole grains than products without such names.

24. According to a food economist and professor at Tufts University, the words used on wheat products can cause consumers to be misled as to the relative amount of whole grains compared to refined grains.

25. For instance, products labeled “multigrain” and “Twelve Grain” by definition contain more than one type of grain.

26. However, consumers expect that besides regular refined grains, the primary grains in those products are whole grains.

27. Instead, they are mostly refined grains with a *de minimis* amount of whole grains.

28. Other potentially misleading terms include “wheat,” “milled wheat,” “stoned wheat” and “stoned ground grain.”

29. These terms have no formal definition about how much whole grain they contain.

30. For instance, “stoned [wheat]” implies a primitive form of processing, i.e., with stones.

31. This is in contrast to the advanced technology and machinery used to create refined grains, or white flour.

32. The result is that consumers expect grain products described and promoted with the word “stone[d]” to contain mostly whole grains, because they are presumed to be less processed than refined grains.

33. Another term which contributed to consumer misunderstanding about whole grains is “honey wheat.”

34. The Public Health Nutrition study found that 43% of respondents believed at least

half to all of the grains in a “honey wheat” product was whole grains.¹

35. However, the amount of whole grains was negligible.

36. Consumers believed “honey wheat” was a type of wheat, and the term “honey” referred to its amber color, darker than regular wheat.

37. Where grains and wheat are described with the term “harvest,” i.e., “harvest grain” and “harvest wheat,” consumers expect mostly whole grains.

38. This is because the word “harvest” is defined and understood as “the process or period of gathering in crops.”

39. By emphasizing the “harvest” in “harvest grain” and “harvest wheat,” consumers expect that the wheat and grains they are consuming is closer in form to its original “harvest” state than after it is fully refined.

40. After all, all grains are initially harvested, but it is their subsequent refining – the removal of the bran and germ – that strips away the nutrients of harvested grains.

41. The public health advocacy group, Center for Science in the Public Interest (“CSPI”), noted that terms such as “harvest grain” was misleading to consumers, who expected it meant a product contained a predominant amount of whole grains.²

42. One food and nutrition professor stated, “Even people with advanced degrees cannot figure out how much whole grain” is in products represented to consumers as whole grain.

43. The FDA and Federal Trade Commission (“FTC”) have cautioned companies against misleading consumers as to the relative amounts of whole grains in foods, through methods

¹ Parke Wilde, et al. “Consumer confusion about wholegrain content and healthfulness in product labels: a discrete choice experiment and comprehension assessment.” *Public Health Nutrition* 23.18 (2020): 3324-3331.

² CSPI, Comments to 2006 FDA Draft Guidance on Whole Grain Labeling.

including the use of non-standardized names for wheat and added dark coloring.

44. Both agencies – based on numerous studies and research – know that when consumers are presented with products that reference or allude to whole grains on the front label, consumers will expect those foods to get between half and all of its grain content from whole grain.

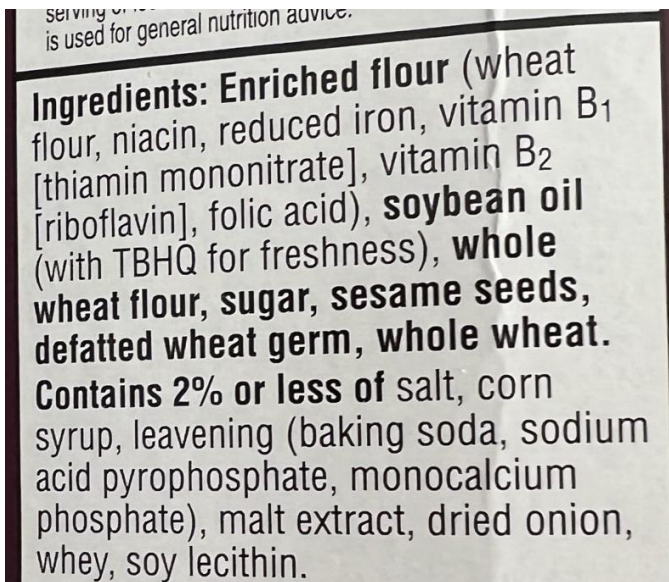
IV. PRODUCT NOT WHOLE GRAIN

45. Despite the labeling of the Product as “Harvest Wheat,” with a dark brown color, and visible pieces of grains, the Product contains a negligible absolute and relative amount of whole grains compared to refined grains.

46. This is revealed in part from the fiber content shown on the Nutrition Facts as less than 1g per serving, or 2% of the Daily Value.

Nutrition Facts	
About 14 servings per container	
Serving size	5 Crackers (16g)
Amount per serving	
Calories	80
% Daily Value*	
Total Fat 3.5g	4%
Saturated Fat 0g	0%
Trans Fat 0g	
Polyunsaturated Fat 2g	
Monounsaturated Fat 1g	
Cholesterol 0mg	0%
Sodium 150mg	7%
Total Carbohydrate 10g	4%
Dietary Fiber <1g	2%
Total Sugars 1g	
Includes 1g Added Sugars	2%
Protein 1g	
Vitamin D 0mcg 0%	Calcium 0mg 0%
Iron 0.5mg 2%	Potassium 20mg 0%
* The % Daily Value (DV) tells you how much a nutrient in a serving of food contributes to a daily diet. 2,000 calories a day is used for general nutrition advice.	

47. This is further confirmed by the ingredient list, which reveals that the most predominant ingredient is “Enriched flour.”



Ingredients: **Enriched flour** (wheat flour, niacin, reduced iron, vitamin B1 [thiamin mononitrate], vitamin B2 [riboflavin], folic acid), **soybean oil** (with TBHQ for freshness), **whole wheat flour**, **sugar**, **defatted wheat germ**, **whole wheat**. Contains 2% or less of salt, corn syrup, leavening (baking soda, sodium acid pyrophosphate, monocalcium phosphate), malt extract, dried onion, whey, soy lecithin.

48. The Product contains more soybean oil than the total amount of whole grains, listed third and fifth as “whole wheat flour” and “whole wheat.”

49. That the amount of soybean oil exceeds the combined total of whole grains is based on an analysis of the values indicated on the Nutrition Facts coupled with the ingredient density based on standardized measurements.

50. Since the amount of soybean oil exceeds the sum of the two listed whole grain ingredients, the Product cannot contain more whole grains than refined grains, because enriched flour is the predominant ingredient.

51. Neither the ingredient list nor the Nutrition Facts tells consumers the Product contains more refined grains compared to whole grains and the amount and percent of grains which are refined relative to whole.

V. INGREDIENTS USED TO DARKEN COLOR AND GIVE APPEARANCE OF MORE WHOLE GRAINS

52. Studies have shown that consumers seeking whole grains look for products darker in color with visible grains.

53. A recent study participant stated, “For me I like to look at the color,” and “I like to

be able to see the grains” to find out if a food is mainly whole grain.

54. This is a natural tendency, because whole grains contain bran to give it a distinctive brown coloring.

55. In contrast, refined grain products are not brown and associated with white flour, which is white and smooth.

56. The Product contains several ingredients which alter its physical appearance so that consumers will expect the “Harvest Wheat” crackers depicted on the label are predominantly whole grain.

57. The first of these ingredients is malt extract, which makes the Product significantly darker than it would be if only based on the amount of refined to whole grains.

58. This is because malt extract is a dark brown liquid, and its reducing sugars and free amino acids participate in the Maillard browning reaction.

59. One prominent manufacturer declared that “Malt extract convinces all along the line,” referring to making consumers believe a product’s darker color was due to its substantive ingredients, such as whole grain.

60. The second ingredient is defatted wheat germ, present in an amount greater than “whole wheat.”

61. The addition of defatted wheat germ results in the Product being mottled with darker spots, specks, and what appear to be visible pieces of grain.



62. Industry publications praise defatted wheat germ as recognized to “help[s] manufacturers of wheat-based products cut down on costs” by using less whole grain and giving consumers the impression a product contains more whole grain.

63. According to a November 2019 article in Food Business News, the tan to dark color of defatted wheat germ and its “granular particle size gives a wholesome appearance and texture to baked foods such as crackers.”

64. Consumers viewing these brown specks will believe they are there because the Product is predominantly whole grain and/or contains a non-de minimis amount of whole grain, when this would be false.

VI. CONCLUSION

65. Defendant makes other representations and omissions with respect to the Product which are false and misleading.

66. The value of the Product that Plaintiff purchased was materially less than its value as represented by Defendant.

67. Defendant sold more of the Product and at higher prices than it would have in the absence of this misconduct, resulting in additional profits at the expense of consumers.

68. Plaintiff paid more for the Product than she would have in the absence of the false and misleading representations and omissions, and would not have bought it or paid less.

69. As a result of the false and misleading representations, the Product is sold at a premium price, approximately no less than no less than \$3.69 for 8 oz, excluding tax and sales, higher than similar products, represented in a non-misleading way, and higher than it would be sold for absent the misleading representations and omissions.

Jurisdiction and Venue

70. Jurisdiction is based on the Class Action Fairness Act of 2005 (“CAFA”). 28 U.S.C. § 1332(d)(2).

71. The aggregate amount in controversy exceeds \$5 million, including sales, statutory and punitive damages, injunctive relief, and attorney’s fees, exclusive of interest and costs.

72. Plaintiff Mary Moore is a citizen of Illinois.

73. Defendant Kellogg Sales Company is a Delaware corporation with a principal place of business in Battle Creek, Calhoun County, Michigan.

74. The class of persons Plaintiff seeks to represent includes persons who are citizens of different states from which Defendant is a citizen

75. The members of the class Plaintiff seeks to represent are more than 100, because the Product has been sold with the representations described here for several years, in thousands of locations, in the States covered by Plaintiff’s proposed classes.

76. The Product is available to consumers from grocery stores, dollar stores, warehouse club stores, drug stores, convenience stores, big box stores, and online.

77. Venue is in this District and assignment is to Springfield because a substantial part of the events or omissions giving rise to these claims occurred in Sangamon County, including Plaintiff's purchase, consumption, transactions and/or use of the Product and awareness and/or experiences of and with the issues described here.

Parties

78. Plaintiff Mary Moore is a citizen of Springfield, Sangamon County, Illinois.

79. Defendant Kellogg Sales Company is a Delaware corporation with a principal place of business in Battle Creek, Calhoun County, Michigan.

80. Kellogg's is one of the largest food manufacturers in the world.

81. Kellogg's founding was based upon its desire to improve the health of medical patients, leading to the innovative corn flakes cereal.

82. The original founder, W.K. Kellogg, believed that a food's ingredients determined its quality, and always prioritized transparency and honesty to his customers.

83. For over a hundred years, American families have trusted Kellogg's products, which have become part of the fabric of American life.

84. Consumers trust Kellogg's because they know its brand represents a commitment to nutrition, backed by science.

85. Defendant spends millions of dollars each year on consumer research to identify attributes of products consumers want and will pay more for.

86. Defendant's internal and external studies confirm that consumers increasingly seek foods which contain a greater absolute and relative amount of whole grains compared to refined

grains, and correspondingly sufficient amounts of fiber.

87. Plaintiff seeks to consume more whole grains, and tries to purchase foods which contain more whole grains than refined grains.

88. Plaintiff relies on the front label of foods, including product names, descriptions, and images, to tell her quickly, when at the store, if a food will contain a non-de minimis amount of whole grains.

89. Plaintiff purchased the Product at locations including Walmart, 2760 N Dirksen Pkwy, Springfield, IL 62702, between July 2022 and September 2022, among other times.

90. Plaintiff believed and expected the Product contained a greater absolute and relative amount of whole grains compared to refined grains, and more fiber, than it did because that is what the representations and omissions said and implied, on the front label and the absence of any reference or statement elsewhere on the Product.

91. Plaintiff relied on the words, terms coloring, descriptions, layout, placement, packaging, hang tags, and/or images on the Product, on the labeling, statements, omissions, claims, statements, and instructions, made by Defendant or at its directions, in digital, print and/or social media, which accompanied the Product and separately, through in-store, digital, audio, and print marketing.

92. Plaintiff bought the Product at or exceeding the above-referenced price.

93. Plaintiff chose between Defendant's Product and products represented similarly, but which did not misrepresent their attributes, requirements, instructions, features, and/or components.

94. Plaintiff intends to, seeks to, and will purchase the Product again when she can do so with the assurance the Product's representations are consistent with its abilities, attributes, and/or

composition.

95. Plaintiff is unable to rely on the labeling and representations not only of this Product, but other similar whole grain products, because she is unsure whether those representations are truthful.

Class Allegations

96. Plaintiff seeks certification under Fed. R. Civ. P. 23 of the following classes:

Illinois Class: All persons in the State of New York who purchased the Product during the statutes of limitations for each cause of action alleged; and

Consumer Fraud Multi-State Class: All persons in the States of Kansas, New Hampshire, Nebraska, Virginia, South Carolina, Montana, Iowa, Mississippi, and Utah who purchased the Product during the statutes of limitations for each cause of action alleged.

97. Common questions of issues, law, and fact predominate and include whether Defendant's representations were and are misleading and if Plaintiff and class members are entitled to damages.

98. Plaintiff's claims and basis for relief are typical to other members because all were subjected to the same unfair, misleading, and deceptive representations, omissions, and actions.

99. Plaintiff is an adequate representative because her interests do not conflict with other members.

100. No individual inquiry is necessary since the focus is only on Defendant's practices and the class is definable and ascertainable.

101. Individual actions would risk inconsistent results, be repetitive and are impractical to justify, as the claims are modest relative to the scope of the harm.

102. Plaintiff's counsel is competent and experienced in complex class action litigation

and intends to protect class members' interests adequately and fairly.

103. Plaintiff seeks class-wide injunctive relief because the practices continue.

Illinois Consumer Fraud and Deceptive Business Practices Act
("ICFA"), 815 ILCS 505/1, et seq.

104. Plaintiff incorporates by reference all preceding paragraphs.

105. Plaintiff believed the Product contained a greater absolute and relative amount of whole grains compared to refined grains, and more fiber, than it did.

106. Defendant's false, misleading and deceptive representations and omissions are material in that they are likely to influence consumer purchasing decisions.

107. Plaintiff relied on the representations and omissions to believe the Product contained a greater absolute and relative amount of whole grains compared to refined grains, and more fiber, than it did.

108. Plaintiff would not have purchased the Product or paid as much if the true facts had been known, suffering damages.

Violation of State Consumer Fraud Acts
(Consumer Fraud Multi-State Class)

109. The Consumer Fraud Acts of the States in the Consumer Fraud Multi-State Class are similar to the consumer protection statute invoked by Plaintiff and prohibit the use of unfair or deceptive business practices.

110. Plaintiff and/or members of the Consumer Fraud Multi-State Class reserve their rights to assert consumer protection claims under their State Consumer Fraud Acts and/or the consumer protection statute invoked by Plaintiff.

111. Defendant intended that members of the Consumer Fraud Multi-State Class would rely upon its deceptive conduct.

Breaches of Express Warranty,
Implied Warranty of Merchantability/Fitness for a Particular Purpose
and Magnuson Moss Warranty Act, 15 U.S.C. §§ 2301, et seq.

112. The Product was manufactured, identified, marketed and sold by Defendant and expressly and impliedly warranted to Plaintiff that it contained a greater absolute and relative amount of whole grains compared to refined grains, and more fiber, than it did.

113. Defendant directly marketed the Product to Plaintiff through its advertisements and marketing, through various forms of media, on the packaging, in print circulars, direct mail, product descriptions distributed to resellers, and targeted digital advertising.

114. Defendant knew the product attributes that potential customers like Plaintiff were seeking and developed its marketing and labeling to directly meet those needs and desires.

115. Defendant's representations were conveyed in writing and promised the Product would be defect-free, and Plaintiff understood this meant that it contained a greater absolute and relative amount of whole grains compared to refined grains, and more fiber, than it did.

116. Defendant's representations affirmed and promised that the Product contained a greater absolute and relative amount of whole grains compared to refined grains, and more fiber, than it did.

117. Defendant described the Product so Plaintiff believed it contained a greater absolute and relative amount of whole grains compared to refined grains, and more fiber, than it did, which became part of the basis of the bargain that it would conform to its affirmations and promises.

118. Defendant had a duty to disclose and/or provide non-deceptive descriptions and marketing of the Product.

119. This duty is based on Defendant's outsized role in the market for this type of Product, a trusted brand known for the highest quality products.

120. Plaintiff recently became aware of Defendant's breach of the Product's warranties.

121. Plaintiff provides or will provide notice to Defendant, its agents, representatives, retailers, and their employees that it breached the Product's express and implied warranties associated with the Product.

122. Defendant received notice and should have been aware of these issues due to complaints by third-parties, including regulators, competitors, and consumers, to its main offices, and by consumers through online forums.

123. The Product did not conform to its affirmations of fact and promises due to Defendant's actions.

124. The Product was not merchantable because it was not fit to pass in the trade as advertised, not fit for the ordinary purpose for which it was intended and did not conform to the promises or affirmations of fact made on the packaging, container or label, because it was marketed as if it contained a greater absolute and relative amount of whole grains compared to refined grains, and more fiber, than it did.

125. The Product was not merchantable because Defendant had reason to know the particular purpose for which the Product was bought by Plaintiff, because she expected it contained a greater absolute and relative amount of whole grains compared to refined grains, and more fiber, than it did, and she relied on Defendant's skill and judgment to select or furnish such a suitable product.

126. Plaintiff would not have purchased the Product or paid as much if the true facts had been known, suffering damages.

Negligent Misrepresentation

127. Defendant had a duty to truthfully represent the Product, which it breached.

128. This duty was non-delegable, based on Defendant's position, holding itself out as having special knowledge and experience in this area, a trusted brand known for the highest quality products.

129. Defendant's representations and omissions regarding the Product went beyond the specific representations on the packaging, as they incorporated the extra-labeling promises and commitments to quality, transparency and putting customers first, that it has been known for.

130. These promises were outside of the standard representations that other companies may make in a standard arms-length, retail context.

131. The representations took advantage of consumers' cognitive shortcuts made at the point-of-sale and their trust in Defendant.

132. Plaintiff reasonably and justifiably relied on these negligent misrepresentations and omissions, which served to induce and did induce, their purchase of the Product.

133. Plaintiff would not have purchased the Product or paid as much if the true facts had been known, suffering damages.

Fraud

134. Defendant misrepresented and/or omitted the attributes and qualities of the Product, that it contained a greater absolute and relative amount of whole grains compared to refined grains, and more fiber, than it did.

135. The records Defendant is required to maintain, and/or the information inconspicuously disclosed to consumers, provided it with actual and constructive knowledge of the falsity and deception, through statements and omissions.

Unjust Enrichment

136. Defendant obtained benefits and monies because the Product was not as represented and expected, to the detriment and impoverishment of Plaintiff and class members, who seek

restitution and disgorgement of inequitably obtained profits.

Jury Demand and Prayer for Relief

Plaintiff demands a jury trial on all issues.

WHEREFORE, Plaintiff prays for judgment:

1. Declaring this a proper class action, certifying Plaintiff as representative and the undersigned as counsel for the class;
2. Injunctive relief to remove, correct and/or refrain from the challenged practices and representations, and restitution and disgorgement for members of the class pursuant to the applicable laws;
3. Awarding monetary, statutory and/or punitive damages pursuant to statutory and/or common law claims;
4. Awarding costs and expenses, including reasonable fees for Plaintiff's attorneys and experts; and
5. Other and further relief as the Court deems just and proper.

Dated: September 5, 2022

Respectfully submitted,

/s/Spencer Sheehan

Sheehan & Associates, P.C.

60 Cuttermill Rd Ste 412

Great Neck NY 11021

Tel: (516) 268-7080

spencer@spencersheehan.com

The JS 44 civil cover sheet and the information contained herein neither replace nor supplement the filing and service of pleadings or other papers as required by the Federal Rules of Civil Procedure and the local rules of court. This form, approved by the Judicial Conference of the United States in September 1974, is required for the use of the Clerk of Court for the purpose of initiating the civil docket sheet. (SEE INSTRUCTIONS ON NEXT PAGE OF THIS FORM.)

I. (a) PLAINTIFFS

Mary Moore, individually and on behalf of all others similarly situated

(b) County of Residence of First Listed Plaintiff Sangamon
(EXCEPT IN U.S. PLAINTIFF CASES)

(c) Attorneys (Firm Name, Address, and Telephone Number)
Sheehan & Associates, P.C., 60 Cuttermill Rd Ste 412 Great Neck NY 11021-3104 (516) 268-7080

DEFENDANTS

Kellogg Sales Company

County of Residence of First Listed Defendant _____
(IN U.S. PLAINTIFF CASES ONLY)

NOTE: IN LAND CONDEMNATION CASES, USE THE LOCATION OF THE TRACT OF LAND INVOLVED.

Attorneys (If Known)

II. BASIS OF JURISDICTION (Place an "X" in One Box Only)

- 1 U.S. Government Plaintiff
- 2 U.S. Government Defendant
- 3 Federal Question (U.S. Government Not a Party)
- 4 Diversity (Indicate Citizenship of Parties in Item III)

III. CITIZENSHIP OF PRINCIPAL PARTIES (Place an "X" in One Box for Plaintiff and One Box for Defendant)

- | | | | | | |
|---|---------------------------------------|----------------------------|---|----------------------------|---------------------------------------|
| | PTF | DEF | | PTF | DEF |
| Citizen of This State | <input checked="" type="checkbox"/> 1 | <input type="checkbox"/> 1 | Incorporated or Principal Place of Business In This State | <input type="checkbox"/> 4 | <input type="checkbox"/> 4 |
| Citizen of Another State | <input type="checkbox"/> 2 | <input type="checkbox"/> 2 | Incorporated and Principal Place of Business In Another State | <input type="checkbox"/> 5 | <input checked="" type="checkbox"/> 5 |
| Citizen or Subject of a Foreign Country | <input type="checkbox"/> 3 | <input type="checkbox"/> 3 | Foreign Nation | <input type="checkbox"/> 6 | <input type="checkbox"/> 6 |

IV. NATURE OF SUIT (Place an "X" in One Box Only)

Click here for: Nature of Suit Code Descriptions .

CONTRACT	TORTS	FORFEITURE/PENALTY	BANKRUPTCY	OTHER STATUTES	
<input type="checkbox"/> 110 Insurance <input type="checkbox"/> 120 Marine <input type="checkbox"/> 130 Miller Act <input type="checkbox"/> 140 Negotiable Instrument <input type="checkbox"/> 150 Recovery of Overpayment & Enforcement of Judgment <input type="checkbox"/> 151 Medicare Act <input type="checkbox"/> 152 Recovery of Defaulted Student Loans (Excludes Veterans) <input type="checkbox"/> 153 Recovery of Overpayment of Veteran's Benefits <input type="checkbox"/> 160 Stockholders' Suits <input type="checkbox"/> 190 Other Contract <input type="checkbox"/> 195 Contract Product Liability <input type="checkbox"/> 196 Franchise	PERSONAL INJURY <input type="checkbox"/> 310 Airplane <input type="checkbox"/> 315 Airplane Product Liability <input type="checkbox"/> 320 Assault, Libel & Slander <input type="checkbox"/> 330 Federal Employers' Liability <input type="checkbox"/> 340 Marine <input type="checkbox"/> 345 Marine Product Liability <input type="checkbox"/> 350 Motor Vehicle <input type="checkbox"/> 355 Motor Vehicle Product Liability <input type="checkbox"/> 360 Other Personal Injury <input type="checkbox"/> 362 Personal Injury - Medical Malpractice	PERSONAL INJURY <input type="checkbox"/> 365 Personal Injury - Product Liability <input type="checkbox"/> 367 Health Care/Pharmaceutical Personal Injury Product Liability <input type="checkbox"/> 368 Asbestos Personal Injury Product Liability PERSONAL PROPERTY <input checked="" type="checkbox"/> 370 Other Fraud <input type="checkbox"/> 371 Truth in Lending <input type="checkbox"/> 380 Other Personal Property Damage <input type="checkbox"/> 385 Property Damage Product Liability	<input type="checkbox"/> 625 Drug Related Seizure of Property 21 USC 881 <input type="checkbox"/> 690 Other LABOR <input type="checkbox"/> 710 Fair Labor Standards Act <input type="checkbox"/> 720 Labor/Management Relations <input type="checkbox"/> 740 Railway Labor Act <input type="checkbox"/> 751 Family and Medical Leave Act <input type="checkbox"/> 790 Other Labor Litigation <input type="checkbox"/> 791 Employee Retirement Income Security Act IMMIGRATION <input type="checkbox"/> 462 Naturalization Application <input type="checkbox"/> 465 Other Immigration Actions	<input type="checkbox"/> 422 Appeal 28 USC 158 <input type="checkbox"/> 423 Withdrawal 28 USC 157 INTELLECTUAL PROPERTY RIGHTS <input type="checkbox"/> 820 Copyrights <input type="checkbox"/> 830 Patent <input type="checkbox"/> 835 Patent-Abbreviated New Drug Application <input type="checkbox"/> 840 Trademark <input type="checkbox"/> 880 Defend Trade Secrets Act of 2016 SOCIAL SECURITY <input type="checkbox"/> 861 HIA (1395ff) <input type="checkbox"/> 862 Black Lung (923) <input type="checkbox"/> 863 DIWC/DIWW (405(g)) <input type="checkbox"/> 864 SSID Title XVI <input type="checkbox"/> 865 RSI (405(g)) FEDERAL TAX SUITS <input type="checkbox"/> 870 Taxes (U.S. Plaintiff or Defendant) <input type="checkbox"/> 871 IRS—Third Party 26 USC 7609	<input type="checkbox"/> 375 False Claims Act <input type="checkbox"/> 376 Qui Tam (31 USC 3729(a)) <input type="checkbox"/> 400 State Reapportionment <input type="checkbox"/> 410 Antitrust <input type="checkbox"/> 430 Banks and Banking <input type="checkbox"/> 450 Commerce <input type="checkbox"/> 460 Deportation <input type="checkbox"/> 470 Racketeer Influenced and Corrupt Organizations <input type="checkbox"/> 480 Consumer Credit (15 USC 1681 or 1692) <input type="checkbox"/> 485 Telephone Consumer Protection Act <input type="checkbox"/> 490 Cable/Sat TV <input type="checkbox"/> 850 Securities/Commodities/Exchange <input type="checkbox"/> 890 Other Statutory Actions <input type="checkbox"/> 891 Agricultural Acts <input type="checkbox"/> 893 Environmental Matters <input type="checkbox"/> 895 Freedom of Information Act <input type="checkbox"/> 896 Arbitration <input type="checkbox"/> 899 Administrative Procedure Act/Review or Appeal of Agency Decision <input type="checkbox"/> 950 Constitutionality of State Statutes
REAL PROPERTY	CIVIL RIGHTS	PRISONER PETITIONS			
<input type="checkbox"/> 210 Land Condemnation <input type="checkbox"/> 220 Foreclosure <input type="checkbox"/> 230 Rent Lease & Ejectment <input type="checkbox"/> 240 Torts to Land <input type="checkbox"/> 245 Tort Product Liability <input type="checkbox"/> 290 All Other Real Property	<input type="checkbox"/> 440 Other Civil Rights <input type="checkbox"/> 441 Voting <input type="checkbox"/> 442 Employment <input type="checkbox"/> 443 Housing/Accommodations <input type="checkbox"/> 445 Amer. w/Disabilities-Employment <input type="checkbox"/> 446 Amer. w/Disabilities-Other <input type="checkbox"/> 448 Education	Habeas Corpus: <input type="checkbox"/> 463 Alien Detainee <input type="checkbox"/> 510 Motions to Vacate Sentence <input type="checkbox"/> 530 General <input type="checkbox"/> 535 Death Penalty Other: <input type="checkbox"/> 540 Mandamus & Other <input type="checkbox"/> 550 Civil Rights <input type="checkbox"/> 555 Prison Condition <input type="checkbox"/> 560 Civil Detainee - Conditions of Confinement			

V. ORIGIN (Place an "X" in One Box Only)

- 1 Original Proceeding
- 2 Removed from State Court
- 3 Remanded from Appellate Court
- 4 Reinstated or Reopened
- 5 Transferred from Another District (specify)
- 6 Multidistrict Litigation - Transfer
- 8 Multidistrict Litigation - Direct File

VI. CAUSE OF ACTION

Cite the U.S. Civil Statute under which you are filing (Do not cite jurisdictional statutes unless diversity):
28 U.S.C. § 1332
Brief description of cause:
false advertising

VII. REQUESTED IN COMPLAINT:

CHECK IF THIS IS A CLASS ACTION UNDER RULE 23, F.R.Cv.P. DEMAND \$ _____ CHECK YES only if demanded in complaint: JURY DEMAND: Yes No

VIII. RELATED CASE(S) IF ANY

(See instructions):

JUDGE _____ DOCKET NUMBER _____

DATE September 5, 2022 SIGNATURE OF ATTORNEY OF RECORD /s/Spencer Sheehan

FOR OFFICE USE ONLY

RECEIPT # _____ AMOUNT _____ APPLYING IFP _____ JUDGE _____ MAG. JUDGE _____

UNITED STATES DISTRICT COURT

for the
Central District of Illinois

Mary Moore, individually and on behalf of all
others similarly situated,

Plaintiff(s)

v.

Kellogg Sales Company,

Defendant(s)

Civil Action No. 3:22-cv-03172

SUMMONS IN A CIVIL ACTION

To: (Defendant's name and address) Kellogg Sales Company
c/o The Corporation Trust Company
1209 N Orange St
Wilmington DE 19801-1120

A lawsuit has been filed against you.

Within 21 days after service of this summons on you (not counting the day you received it) — or 60 days if you
are the United States or a United States agency, or an officer or employee of the United States described in Fed. R. Civ.
P. 12 (a)(2) or (3) — you must serve on the plaintiff an answer to the attached complaint or a motion under Rule 12 of
the Federal Rules of Civil Procedure. The answer or motion must be served on the plaintiff or plaintiff's attorney,
whose name and address are: Sheehan & Associates, P.C., 60 Cuttermill Rd Ste 412 Great Neck NY 11021
(516) 268-7080

If you fail to respond, judgment by default will be entered against you for the relief demanded in the complaint.
You also must file your answer or motion with the court.

CLERK OF COURT

Date:

Signature of Clerk or Deputy Clerk

Civil Action No. _____

PROOF OF SERVICE

(This section should not be filed with the court unless required by Fed. R. Civ. P. 4 (l))

This summons for *(name of individual and title, if any)* _____
was received by me on *(date)* _____ .

I personally served the summons on the individual at *(place)* _____
_____ on *(date)* _____ ; or

I left the summons at the individual's residence or usual place of abode with *(name)* _____
_____, a person of suitable age and discretion who resides there,
on *(date)* _____, and mailed a copy to the individual's last known address; or

I served the summons on *(name of individual)* _____, who is
designated by law to accept service of process on behalf of *(name of organization)* _____
_____ on *(date)* _____ ; or

I returned the summons unexecuted because _____ ; or

Other *(specify)*:

My fees are \$ _____ for travel and \$ _____ for services, for a total of \$ _____ .

I declare under penalty of perjury that this information is true.

Date: _____

Server's signature

Printed name and title

Server's address

Additional information regarding attempted service, etc:

ClassAction.org

This complaint is part of ClassAction.org's searchable class action lawsuit database and can be found in this post: [Kellogg's Toasteds Harvest Wheat Crackers Contain Less Whole Grain Than Advertised, Lawsuit Says](#)
